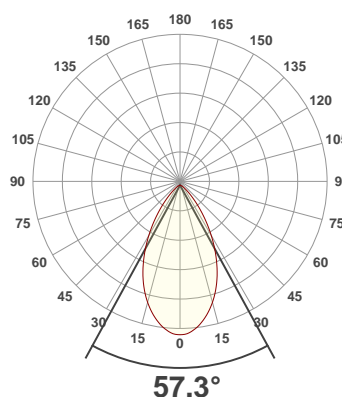
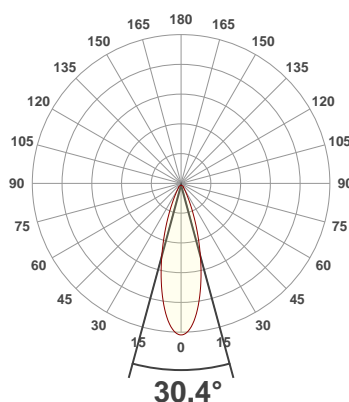




**PRODUCT INFORMATION**

SERIAL NUMBER:	LL-20190826-545-BMS
DATE OF MEASUREMENT:	2019-08-26
SIZE (l x w. x h):	298 mm x 71 mm x 59.5 mm

**ANGULAR DISTRIBUTION AT C0/180 | ANGULAR DISTRIBUTION AT C90/270 | LIGHT OUTPUT DATA**

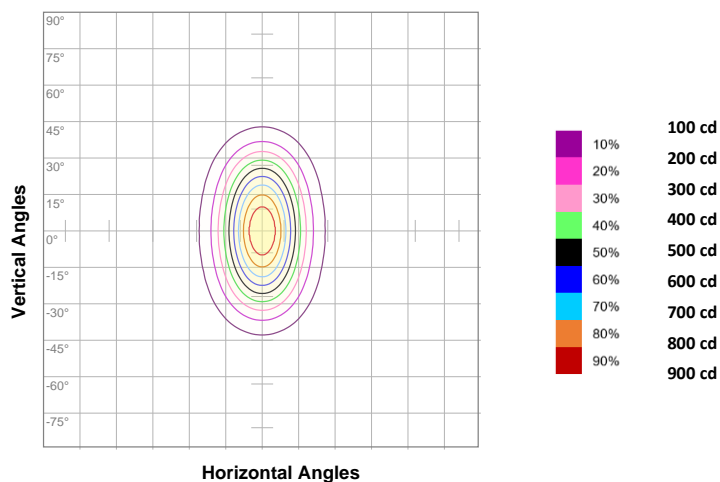


TOTAL LUMEN OUTPUT:	609 lm
EFFICACY:	32 lm/W
PEAK INTENSITY:	1001 cd
COLOR RENDERING INDEX (CRI):	28.6
COLOR TEMPERATURE (CCT):	24156K
FIDELITY INDEX (TM30Rf):	0.0
GAMUT INDEX (TM30Rg):	n/a

**BEAM OUTPUT DATA**

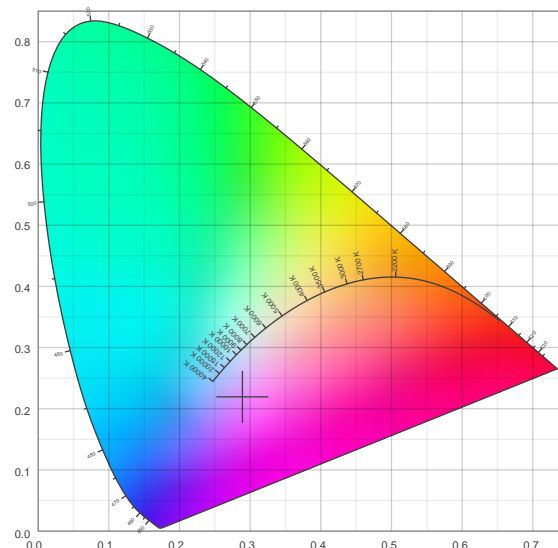
BEAM ANGLE (FWHM)   C0/180:	30.4°
BEAM ANGLE (FWHM)   C90/270:	57.3°
FIELD ANGLE (10%)   C0/180:	57.9°
FIELD ANGLE (10%)   C90/270:	95.4°
NUMBER OF PLANES MEASURED:	36

**ISOCANDELA DIAGRAM**

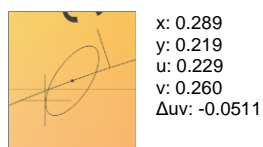
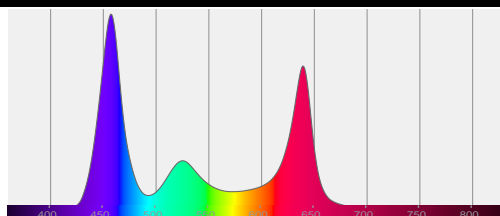


INPUT POWER:	19.2 W
POWER FACTOR:	1.0
OPTICAL POWER:	3.01 mW
PEAK WAVELENGTH:	458 nm
DOMINANT WAVELENGTH:	360 nm

**CIE 1931**



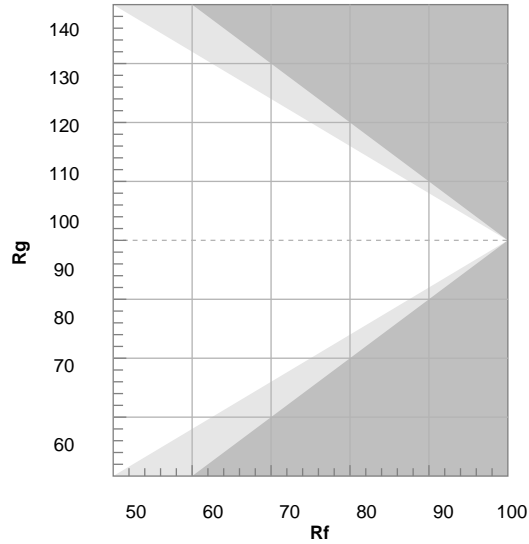
**SPECTRAL DISTRIBUTION | CIE 1931 ZOOM**





TM30 DETAILS

Hue Bin	R <sub>f</sub>	Graphic shifts (%)	
		Chroma	Hue
1	0	0%	0%
2	0	0%	0%
3	0	0%	0%
4	0	0%	0%
5	0	0%	0%
6	0	0%	0%
7	0	0%	0%
8	0	0%	0%
9	0	0%	0%
10	0	0%	0%
11	0	0%	0%
12	0	0%	0%
13	0	0%	0%
14	0	0%	0%
15	0	0%	0%
16	0	0%	0%



FIDELITY INDEX

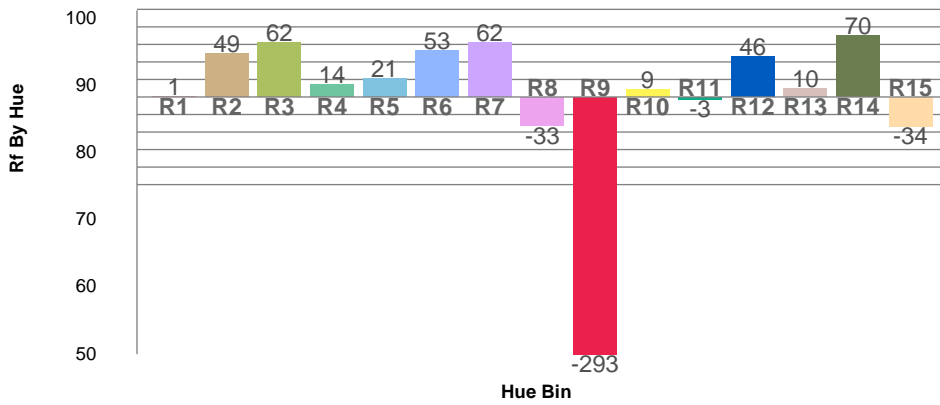
**R<sub>f</sub> 0.0**

GAMUT INDEX

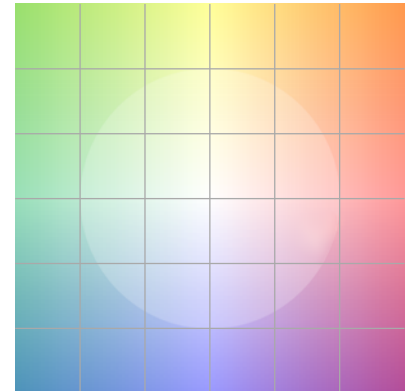
**R<sub>g</sub> n/a**

Approx. limits for sources on the Planckian locus.  
 Approx. limits for practical light sources.

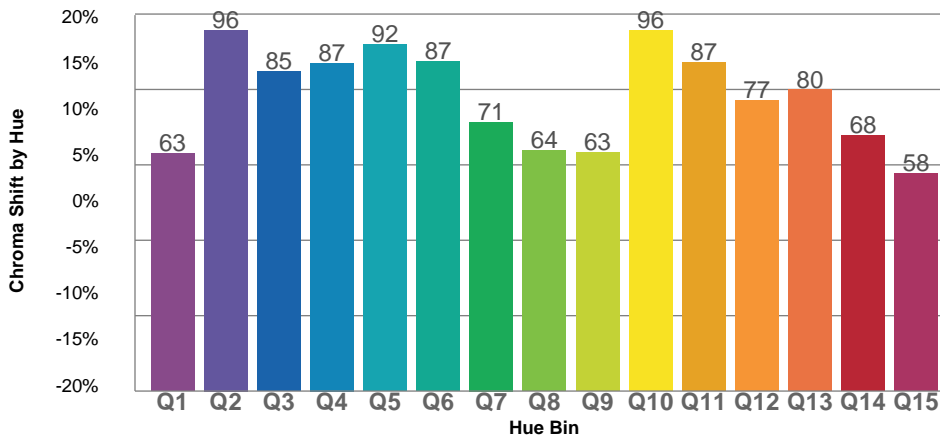
TM30 OVER 50



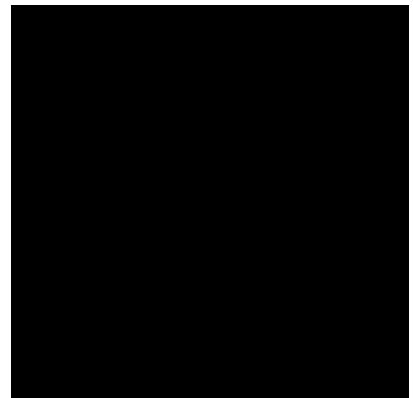
COLOR VECTOR GRAPHICS

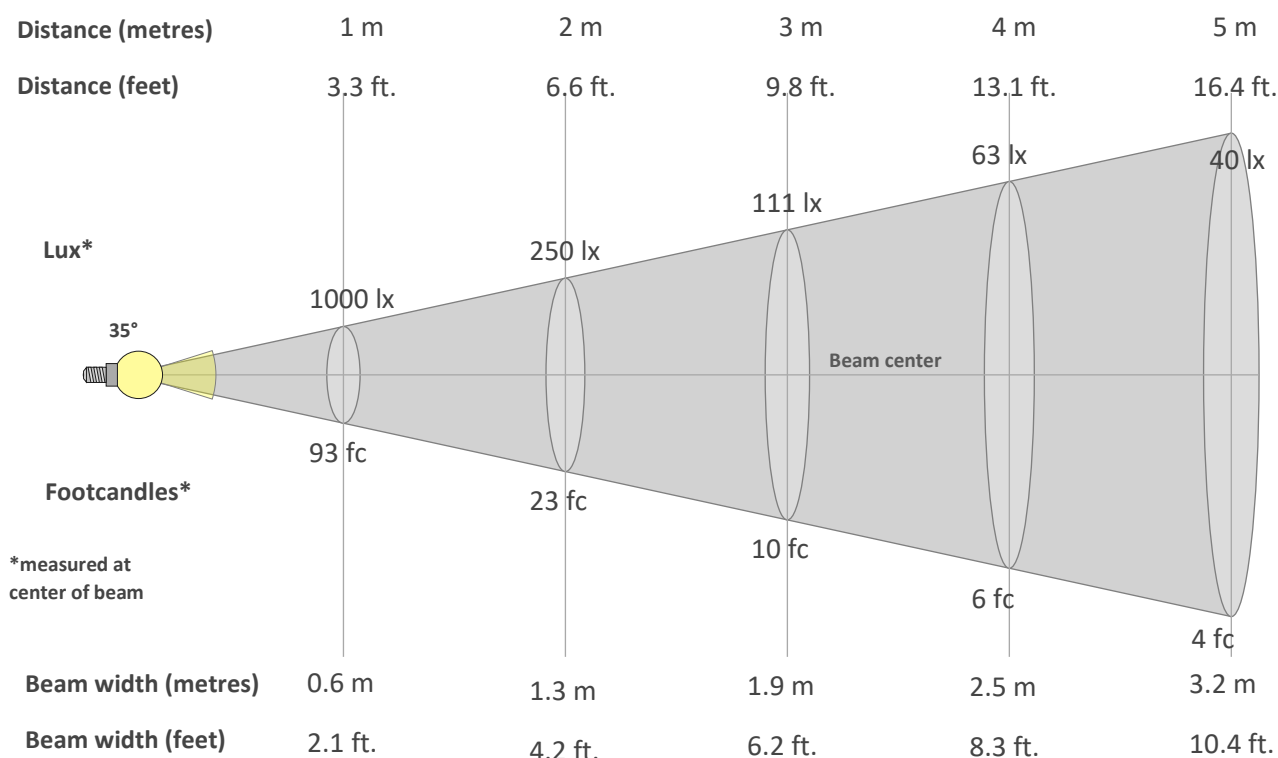


TM30 CHROMA SHIFT



COLOR DISTORTION GRAPHICS



**BEAM DETAILS**

**Beam intensity from 1-20m**

1m	2m	3m	4m	5m	6m	7m	8m	9m	10m	11m	12m	13m	14m	15m	16m	17m	18m	19m	20m
3.3ft	6.6ft	9.8ft	13.1ft	16.4ft	19.7ft	23ft	26.2ft	29.5ft	32.8ft	36.1ft	39.4ft	42.7ft	45.9ft	49.2ft	52.5ft	55.8ft	59.1ft	62.3ft	65.6ft
1000lx	250lx	111lx	63lx	40lx	28lx	20lx	16lx	12lx	10lx	8lx	7lx	6lx	5lx	4lx	4lx	3lx	3lx	3lx	3lx
92.9fc	23.2fc	10.3fc	5.8fc	3.7fc	2.6fc	1.9fc	1.5fc	1.1fc	0.9fc	0.8fc	0.6fc	0.5fc	0.5fc	0.4fc	0.4fc	0.3fc	0.3fc	0.3fc	0.2fc

**Intensity in 0° c-plane**

0°	2°	4°	6°	8°	10°	12°	14°	16°	18°	20°	22°	24°	26°	28°	30°	32°	34°	36°	38°
1000	989	952	895	821	736	646	554	465	382	306	242	188	145	112	88	71	58	49	41
100%	99%	95%	89%	82%	74%	65%	55%	47%	38%	31%	24%	19%	14%	11%	9%	7%	6%	5%	4%

**Intensity in 90° c-plane**

0°	2°	4°	6°	8°	10°	12°	14°	16°	18°	20°	22°	24°	26°	28°	30°	32°	34°	36°	38°
1000	995	984	965	942	914	882	847	809	767	722	674	623	570	516	462	409	357	308	260
100%	100%	98%	97%	94%	91%	88%	85%	81%	77%	72%	67%	62%	57%	52%	46%	41%	36%	31%	26%

**Intensity in 180° c-plane**

0°	2°	4°	6°	8°	10°	12°	14°	16°	18°	20°	22°	24°	26°	28°	30°	32°	34°	36°	38°
1000	989	952	895	821	736	646	554	465	382	306	242	188	145	112	88	71	58	49	41
100%	99%	95%	89%	82%	74%	65%	55%	47%	38%	31%	24%	19%	14%	11%	9%	7%	6%	5%	4%

**Intensity in 270° c-plane**

0°	2°	4°	6°	8°	10°	12°	14°	16°	18°	20°	22°	24°	26°	28°	30°	32°	34°	36°	38°
1000	995	984	965	942	914	882	847	809	767	722	674	623	570	516	462	409	357	308	260
100%	100%	98%	97%	94%	91%	88%	85%	81%	77%	72%	67%	62%	57%	52%	46%	41%	36%	31%	26%